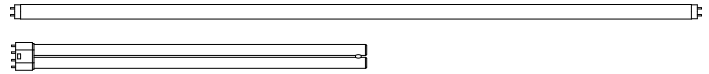


SPECIFICATIONS



Housing: 20 gauge steel with white powder coat finish.

Reflector: White powder coat finish.

Fascia: Choice of wood or aluminum fascia. Curved wood fascia is extruded aluminum with hardwood veneer. Flat wood shielding is 3/4" solid wood.

Electrical: Instant start, normal light output, high power factor, sound rated A electronic ballast is standard. One-lamp ballast is 0.90 ballast factor, two, three and four-lamp ballasts are 0.88 ballast factor for 120 and 277 volt. One-lamp ballast is 1.17 ballast factor and two-lamp ballast is 0.92 ballast factor for 347 volt.

Finish: Curved wood fascia is natural red oak veneer with a clear satin finish applied to an aluminum extrusion. The back is painted with white powder coat paint. The edges of the fascia are painted with dark brown powder coat paint. Custom wood finishes are optional, consult factory regarding availability.

Extruded aluminum fascias are finished in semi-gloss white powder coat paint or choose from a variety of standard colors on our color chart. Custom colors are available

Certification: UL, CUL and IBEW labeled.



EXAMPLE

series	fascia	# of lamp	type of lamp	lamp length	fascia length	finish	voltage	options
GC	W	1	T8	4	6	RO	120	GLR
GC	W-wood	1	T8	2'	2'	Wood:	120	SOC -custom angle outside corner
LC	A-aluminum	2	Biax	3'	3'	RO-red oak (standard)	277	SIC -custom angle inside corner
AC				4'	4'	CUF-custom wood finish		OC -90° outside corner
LF				6'	6'	Aluminum:		IC -90° inside corner
AF				8'	8'	TSGW-textured semi-gloss white (refer to color chart in Product Selection Guide for other standard colors).		WE -wood ends (wood fascia only)
					X'	CC-custom color		RWE -right wood end (wood fascia only)
					(specify extra fascia length to fit job conditions, fascias are field trimmable)			LWE -left wood end (wood fascia only)
								GLR -GLR fusing and HLR holder
								GMF -GMF slow blow fuse and holder
								EM1 -B70A or equal
								EM2 -B50 or equal
								EM3 -B100 or equal
								EM4 -B60 or equal
								DIM1 -Advance Mark VII dimming
								DIM2 -Advance Mark X dimming
								DIM3 -Lutron ECO-10 dimming ballast
								DIM4 -Lutron Hi-Lume dimming ballast

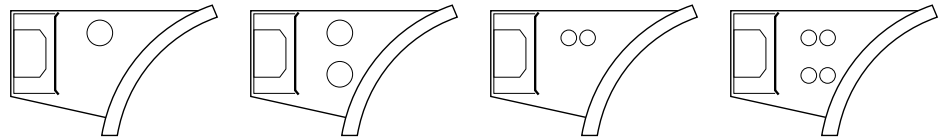
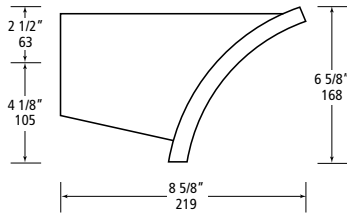
Due to a program of continuous improvement, LAM Lighting reserves the right to make any variation in design or construction to the equipment described.

ORDER

project name: _____ type: _____ quantity: _____

- - - - - - - - -

GC Semi-Indirect (more uplight)



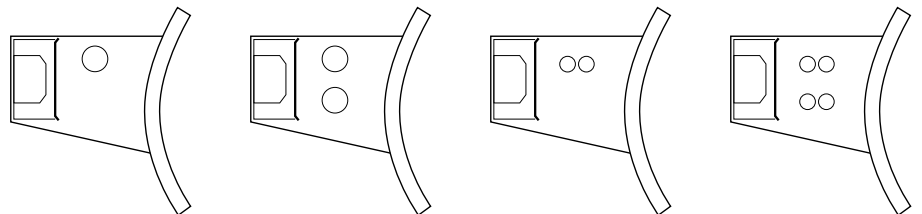
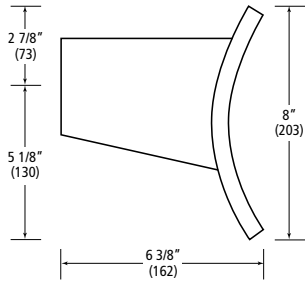
GC-W-1T8

GC-W-2T8

GC-W-1BX

GC-W-2BX

LC Direct/Indirect (more downlight)



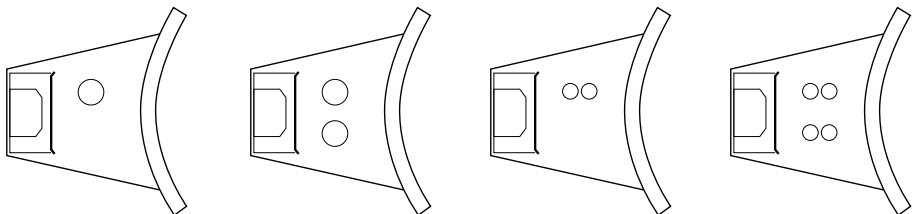
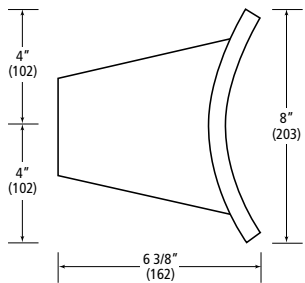
LC-W-1T8

LC-W-2T8

LC-W-1BX

LC-W-2BX

AC Direct/Indirect (equal uplight & downlight)



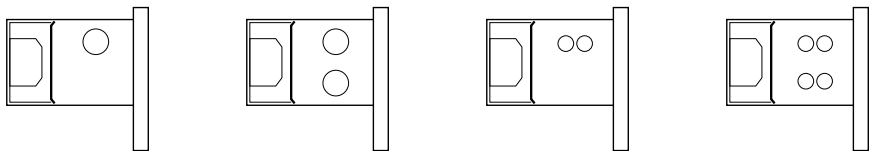
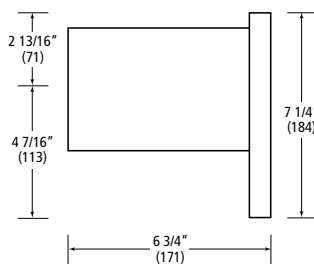
AC-W-1T8

AC-W-2T8

AC-W-1BX

AC-W-2BX

LF Direct/Indirect



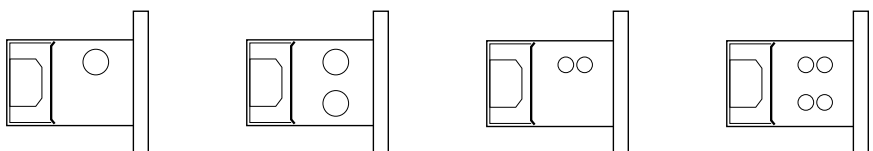
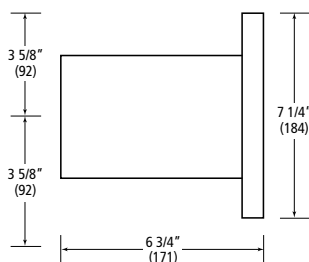
LF-W-1T8

LF-W-2T8

LF-W-1BX

LF-W-2BX

AF Direct/Indirect



AF-W-1T8

AF-W-2T8

AF-W-1BX

AF-W-2BX