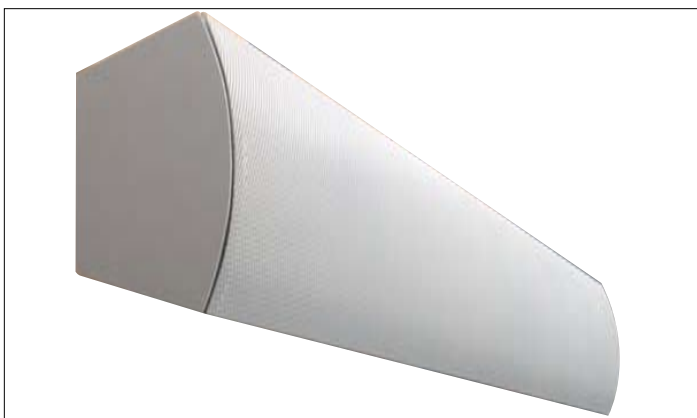


SPECIFICATIONS



Housing: ADA compliant steel fascia and ends. Row mounted fixtures have joints on 8 foot intervals.

Reflector: Specular aluminum providing 50% direct lighting.

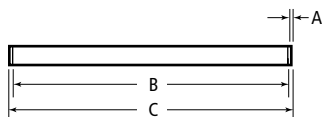
Shielding: Perforated or solid front. Open top and bottom.

Electrical: Instant start, normal light output, high power factor, sound rated A electronic ballast is standard. T8 ballasts are 0.88 ballast factor for 120 and 277-Volt. Ballast factor for T8 347-Volt varies, consult factory.

Mounting: Wall mounted only. Housing will cover 4" J-box.

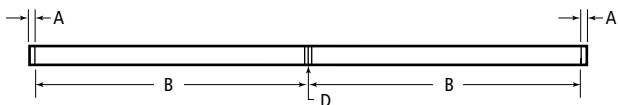
Finish: Semi-gloss white powder coat paint is standard. Choose from a variety of standard colors on our color chart. Custom colors are available.

Certification: UL and CUL listed. IBEW labeled.

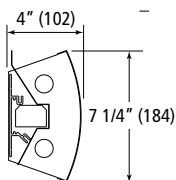


KADA T8

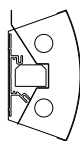
	A	B	C	D
4'	1/4"	48 3/32"	48 19/32"	1/16"
6		1221	1233	2
8'	1/4"	96 7/16"	96 15/16"	1/16"
6		2448	2460	2



DIMENSIONS



LAMP CONFIGURATIONS



KADA-T8

EXAMPLE

series	fascia	# of lamps	type of lamp	fixture length	finish	voltage	options
KADA	B	2	T8	4	SGW	120	GLR
	A-solid front B-perforated front	2	T8	4' 8'	SGW-semi-gloss white (refer to color chart in Product Selection Guide for other standard colors) CC-custom color	120 277 Dual 347	GLR-GLR fuse and HLR holder GMF-GMF slow blow fuse and holder EM1-B70A or equal EM2-B50 or equal EM3-B100 or equal EM4-B60 or equal DIM1-Advance Mark VII dimming DIM2-Advance Mark X dimming DIM3-Lutron ECO-10 dimming ballast DIM4-Lutron Hi-Lume dimming ballast DIM5-Lutron ECO-10 TVE dimming ballast DIM6-Lutron Tu-Wire dimming ballast (for T8, 32W, 120-volt only)

Due to a program of continuous improvement, LAM Lighting reserves the right to make any variation in design or construction to the equipment described.

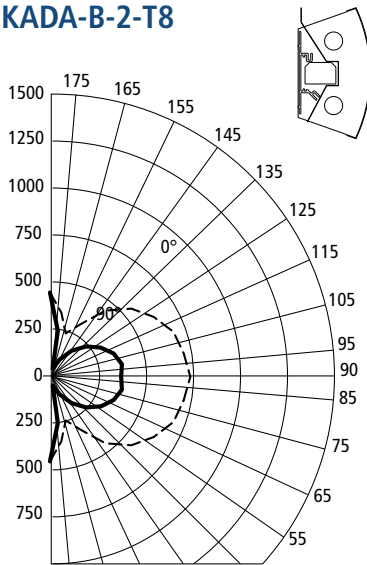
ORDER

project name: _____ type: _____ quantity: _____

- - - - - - -

PHOTOMETRICS

KADA-B-2-T8



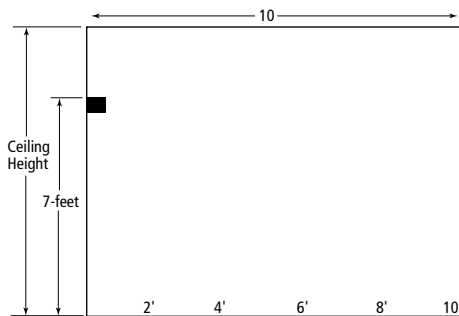
CANDELA DISTRIBUTION

	0	45	90	135	180
180°	349	349	349	349	349
170°	193	273	270	308	369
160°	37	155	191	282	214
150°	83	144	251	218	55
140°	141	207	358	263	71
130°	196	279	439	318	85
120°	243	314	496	352	96
110°	280	346	544	365	103
100°	302	356	562	374	104
90°	295	371	580	385	86
80°	302	356	562	374	104
70°	280	346	544	365	103
60°	244	314	496	352	96
50°	196	279	439	313	85
40°	141	207	358	263	71
30°	83	144	251	218	55
20°	37	155	191	282	215
10°	193	273	270	308	369
0°	349	349	349	349	349

ZONAL LUMEN SUMMARY

Zone	Lumens	% Fixture Output	% Lamp Output
0-90°	2011	50.0	36.6
90-180°	2011	50.0	36.6
0-180°	4023	100.0	73.2

APPLICATION DATA



KADA-2-T8-4, 2-Lamp, F32T8, 2950 lumens per lamp, 0.75 LLF, 0.88 Ballast Factor, continuous row

POWER DENSITY IS 1.5 WATTS PER SQUARE FOOT

Ceiling Height	2'	4'	6'	8'	10'	
8'	16	14	11	9	5	10 FC floor average, 7 FC opposite wall average
9'	13	12	10	9	6	8 FC floor average, 5 FC opposite wall average

Reflectance: 80/50/20

Light Loss Factor - 0.95 room depreciation, 0.95 fixture depreciation, 0.95 lamp depreciation, 0.88 ballast factor = .75 total LLF